



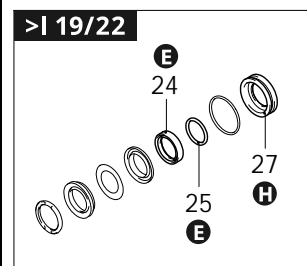
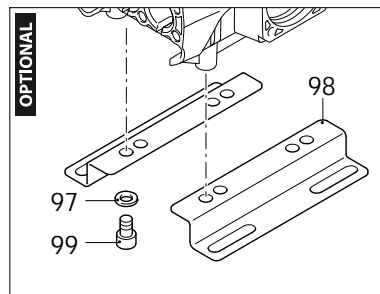
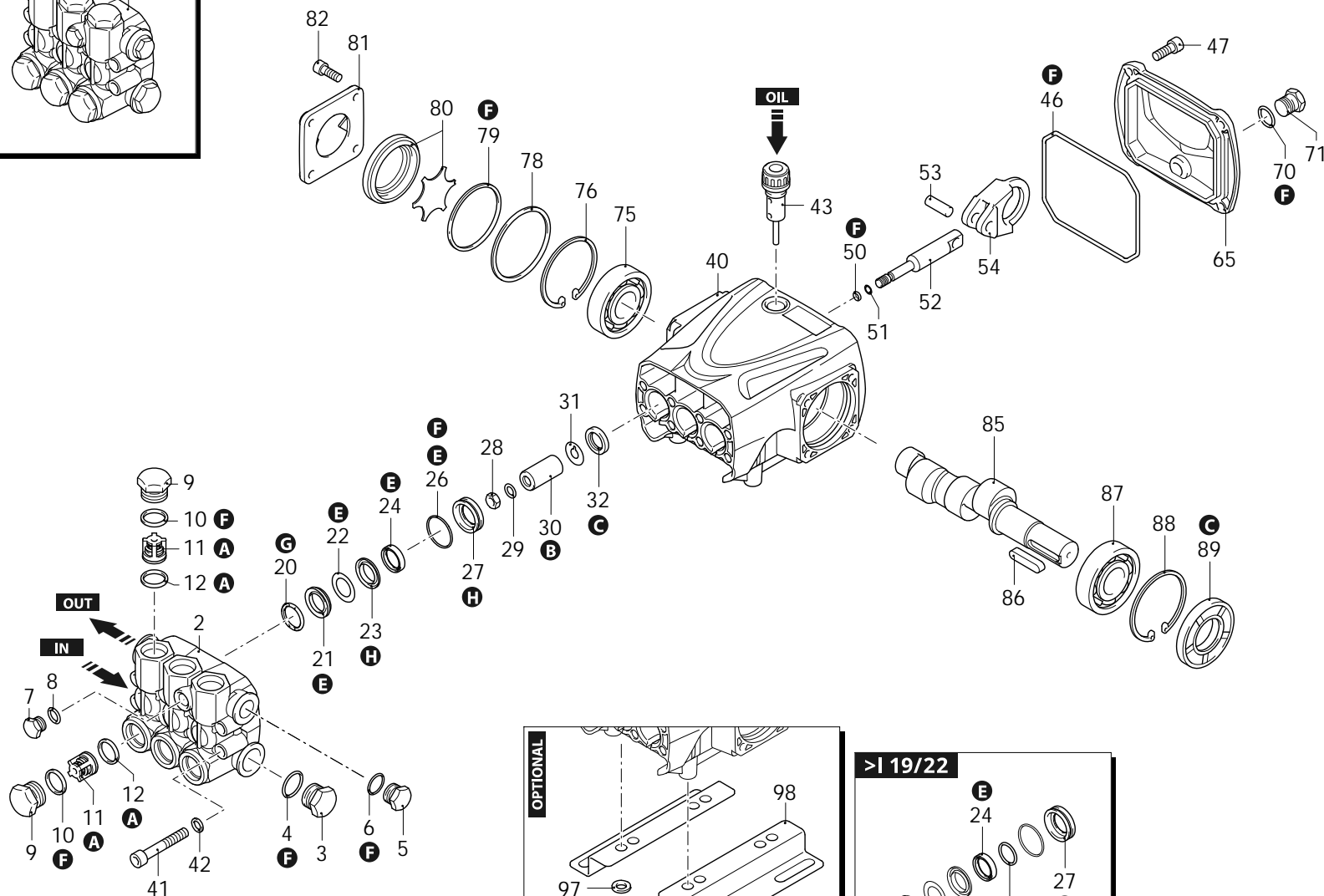
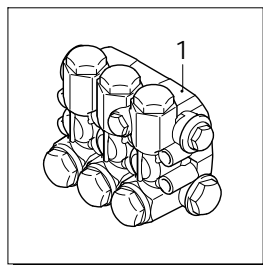
Series 322

RR

N

1450rpm

ø 24mm



AR\_s322-01\_v01

29/09/2023



Series 322

RR

N

1450rpm

ø 24mm

P	Code	Description	Q	Note	Validity	P	Code	Description	Q	Note	Validity
1	3229200	Head assembly	Ø 18	1		65	3220030	Cover	1		
2	3220020	Head		1		70	820510	O-ring	Ø 10,82x1,78	1	
3	820361	Plug	1/2" G brass	1	C=40Nm	71	880581	Plug	1/4" G brass	1	Screw with Loxeal 55-14 / C=15Nm
4	180101	O-ring	Ø 17,5x2	1	Lubricate with grease Molykote PG54	75	1981210	Bearing		1	
5	1980740	Plug	3/8" G brass	1	C=20Nm	76	200390	Ring	seeger Øi 62	1	
6	740290	O-ring	Ø 14x1,78	1	Lubricate with grease Molykote PG54	78	3220780	Ring	Ø 61,8x57,8x0,5	1	
7	880581	Plug	1/4" G brass	1	Screw with Loxeal 55-14 / C=15Nm	79	650560	O-ring	Ø 56,82x2,62	1	Lubricate with grease Molykote PG54
8	820510	O-ring	Ø 10,82x1,78	1		80	3229603	Oil level assembly		1	
9	960090	Plug	brass	6	Screw with Loxeal 55-14 / C=54Nm	81	3200070	Support		1	
10	960160	O-ring	Ø 17,86x2,62	6	Lubricate with grease Molykote PG54	82	1200430	Screw	TCEI M6x16	4	Screw with Loxeal 55-14 / C=10Nm
11	1389051	Complete valve		6		85	3220320	Shaft	3 marked	1	
12	880830	O-ring	Ø 15,54x2,62	6		86	3200230	Key		1	
20	1780140	Ring	support Ø 18	3		87	1981210	Bearing		1	
21	1780720	Water seal	Ø 18	3	Lubricate with grease Molykote PG54	88	200390	Ring	seeger Øi 62	1	
22	3200250	Ring	anti-extrusion	3		89	3220280	Ring	seal	1	
23	3220130	Piston guide	front Ø 18	3		97	1322640	Washer		4	
24	3200142	Gasket	Ø 18	3	Lubricate with grease Molykote PG54	98	3200210	Foot		2	
24	1260450	Water seal	Ø 18	3	Lubricate with grease Molykote PG54	99	850250	Screw	TCEI M8x12	4	C=24,5Nm
25	3200260	Ring	anti-extrusion	3		A	2864	Valve kit		1	
26	770260	O-ring	Ø 23,52x1,78	3		B	2746	Piston kit	Ø 18	1	
27	3220120	Piston guide	rear Ø 18	3		C	42547	Oil seal kit		1	
27	3221030	Piston guide	rear Ø 18	3		E	42549	Water seal kit	Ø 18	1	>I 19/22
28	1260110	Nut	M8	3	Screw with Loxeal 55-14 / C=12Nm	E	47110	Water seal kit	Ø 18	1	I> 20/22
29	1260100	Washer		3		F	42550	Gasket kit		1	
30	1780080	Piston	Ø 18	3		G	2745	Support ring kit	Ø 18	1	
31	1260091	Plate		3		H	42548	Piston guide kit	Ø 18	1	>I 19/22
32	1260460	Oil seal		3		H	47109	Piston guide kit	Ø 18	1	I> 20/22
40	3220010	Pump body		1							
41	800860	Screw	TCEI M8x55	8							
42	1381850	Washer		8							
43	880130	Oil plug	with oil dipstick	1							
46	651540	O-ring	Ø 107,62x2,62	1							
47	3200220	Screw	TCEI 6x16	4	C=8Nm						
50	480480	O-ring	Ø 4,48x1,78	3							
51	1080550	Ring	anti-extrusion	3							
52	3220060	Piston	guide	3							
53	3220070	Pin		3							
54	3220040	Connecting-rod	aluminium	3	Lubricate with grease Molykote G807						

Revision: 1

Oil type: SAE 15W40

Attachment:

Date: 29/09/2023

Oil quantity: 0,350 Kg

*C= Tightening torque (Tolerance +0 ÷ -10%)**\* = Not present for electric pump*